



# Innovating in AI between Germany and Tunisia

Mar 2022

# InstaDeep: EMEA Leader in AI



Founded in 2014 in Tunis



6 Offices



180 Employees

**AI-powered products:** autonomous decision-making AI software

## Three Pillars Differentiate InstaDeep

**Solving complex challenges for top tier international customers**



**Access to top Talent. Partner with leading Universities**



**Cutting-edge AI Research Joint R&D work with elite partners**



\* 5 InstaDeepers out of 171 Google ML Dev Experts globally

**Distinctions & Awards**



# Cutting-Edge AI Decision Making Technology

InstaDeep's Decision Making Technology

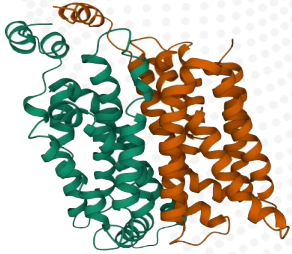


Domain Expertise



Scalable Products

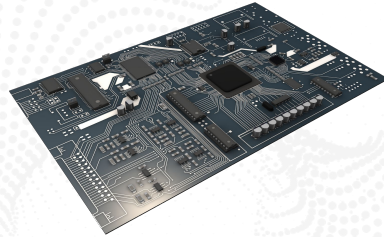
**DeepChain™**  
(Drug/Vaccine Design)



**Design new candidate cures and vaccines with AI and BioInformatics**

Accelerates drug development cycles saving time, money & lives

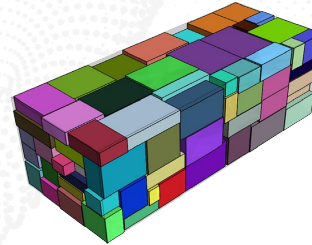
**DeepPCB™**  
(Hardware/IOT)



**Design complex printed circuit boards in less than 24 Hours**

Accelerates the product cycle in IOT and consumer electronics

**DeepPack™**  
(Logistics/Supply Chain)



**Pack items more efficiently to improve supply chain logistics**

Save money on transport costs for large shipments

**CTMS AI**  
(Fleet Management with DB)



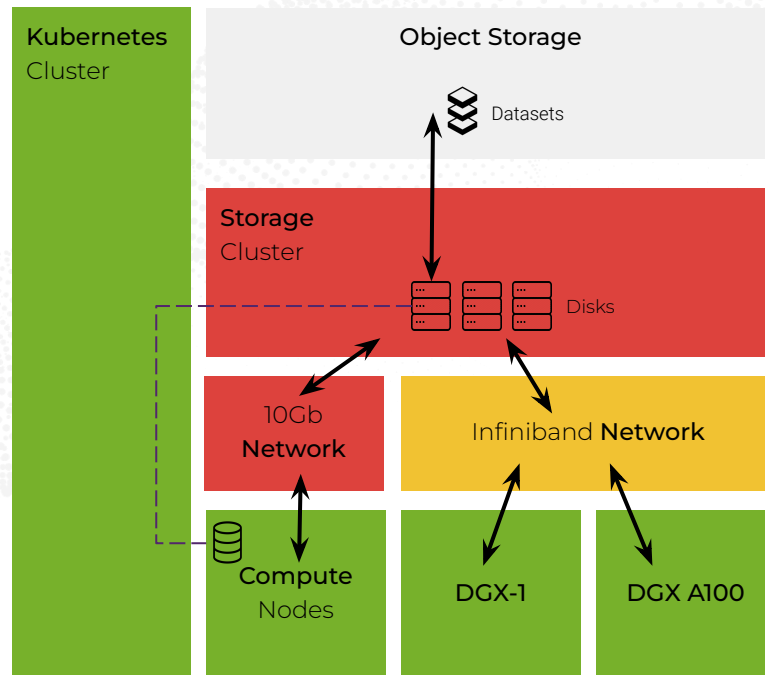
**Optimize train scheduling and mobility fleet management**

Reduces passenger delays, better yields on infrastructure projects

# Expertise in ML Infrastructure



- InstaDeep is a certified **Service Delivery Partner (SDP)** for Nvidia and one of **only 6 AI Elite Partners** worldwide.
- InstaDeep operates its own cluster of **NVIDIA DGX** GPUs, including the latest A100 and is an expert user of related software stack, including **Jarvis** (for NLP) and **NEMO**.
- InstaDeep has proven expertise implementing end-to-end projects on **supercomputers** using thousands of Nvidia GPU nodes.
- This **infrastructure expertise** is available to our customers and can help **save costs** vs. cloud computing.



# Collaboration with BioNTech



Overview

[Press Releases](#)

Events & Presentations

SEC Filings

Financial Reports

Financial Calendar

## BioNTech and InstaDeep Announce Strategic Collaboration and Form AI Innovation Lab to Develop Novel Immunotherapies

“Long-term collaboration underpins BioNTech’s strategy to leverage Artificial Intelligence (AI) and Machine Learning (ML) technologies to support the discovery and development of novel immunotherapies based on InstaDeep’s DeepChain™ technology platform.

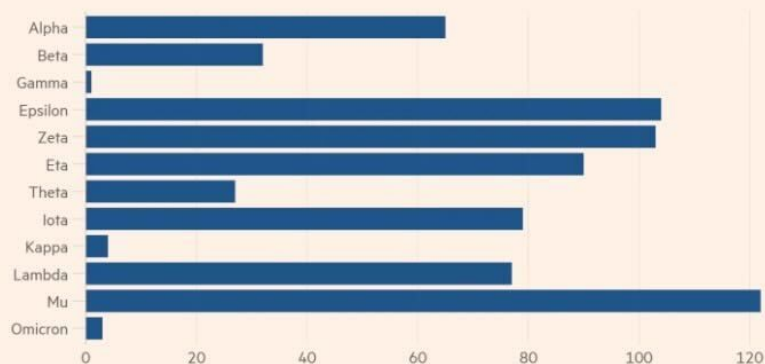
[Joint BioNTech & InstaDeep Press Release \(Nov 2020\)](#)

# Covid-19 Early Warning System (developed with BioNTech)

“More than 10,000 novel variant sequences are discovered every week and human experts simply cannot cope with complex data at this scale,” said Karim Beguir, co-founder and chief executive of UK-based InstaDeep. “For the first time, high-risk variants could be detected on the spot, potentially saving months of precious time.”

## How AI tool will help detection of coronavirus variants of concern

Difference in days between early warning system detection date and WHO designation of the variant as high-risk



Sources: BioNTech, InstaDeep  
© FT



# Our Framework

Our ethos is a **collaborative approach** where we encourage **knowledge-sharing** and regular check-ins.



- Hands-on approach to understand your business challenges, iterate with you to reach results.
- Project can be **de-risked** by defining intermediate **milestones**.
- Start with a Pilot Project and increase gradually **only** upon us delivering **material results** at each step.

**Our Goal is to deliver results and accelerate your AI & Digital transformation journey**

# Thank you!

---

