



الدقم Duqm

هيئة المنطقة الاقتصادية الخاصة  
Special Economic Zone Authority

سلطنة عُمان Sultanate of Oman







Welcome to ....  
Oman Gateway to the world

[www.duqm.gov.om](http://www.duqm.gov.om)



# Explore Duqm...

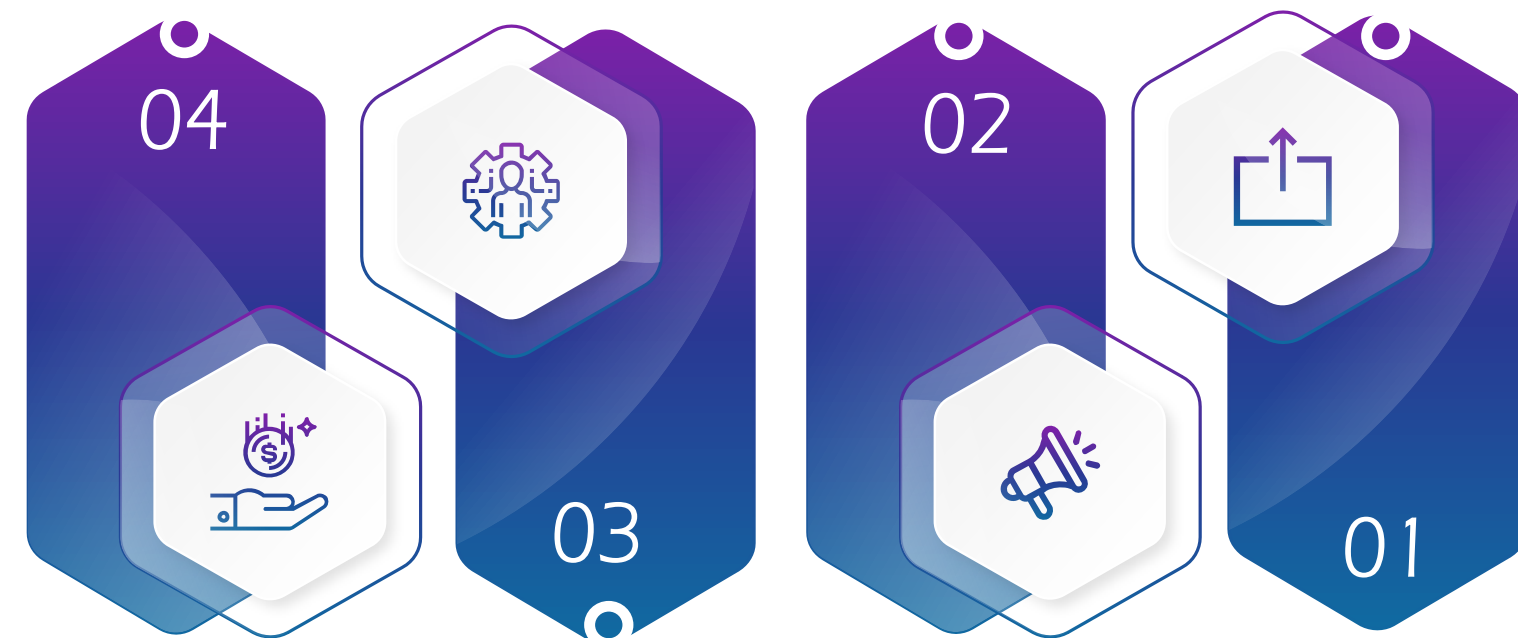


Duqm, Past and Present



# Government Strategic Agenda...

Increase Private Sector  
contribution to GDP



Creation of high  
value jobs.

Sustainable  
Economic Growth

Economic  
diversification





# Why Duqm...



## **STRATEGIC LOCATION**

maritime transit hub and a logistics gateway



## **POTENTIAL LAND AREA FOR DEVELOPMENT ...**

total area of 2000 sq. km and 90 km coastline



## **MULTI-MODEL TRANSPORTATION SYSTEM**



## **EASE OF DOING BUSINESS**



## **AVAILABILITY OF DIVERSE NATURAL RESOURCES**

Export manufacturing platform...







# GLOBAL TRADE

A significant location linked to the  
Global Markets



# Leveraging its Unique Position

2.5 billion  
people market

*Close proximity*



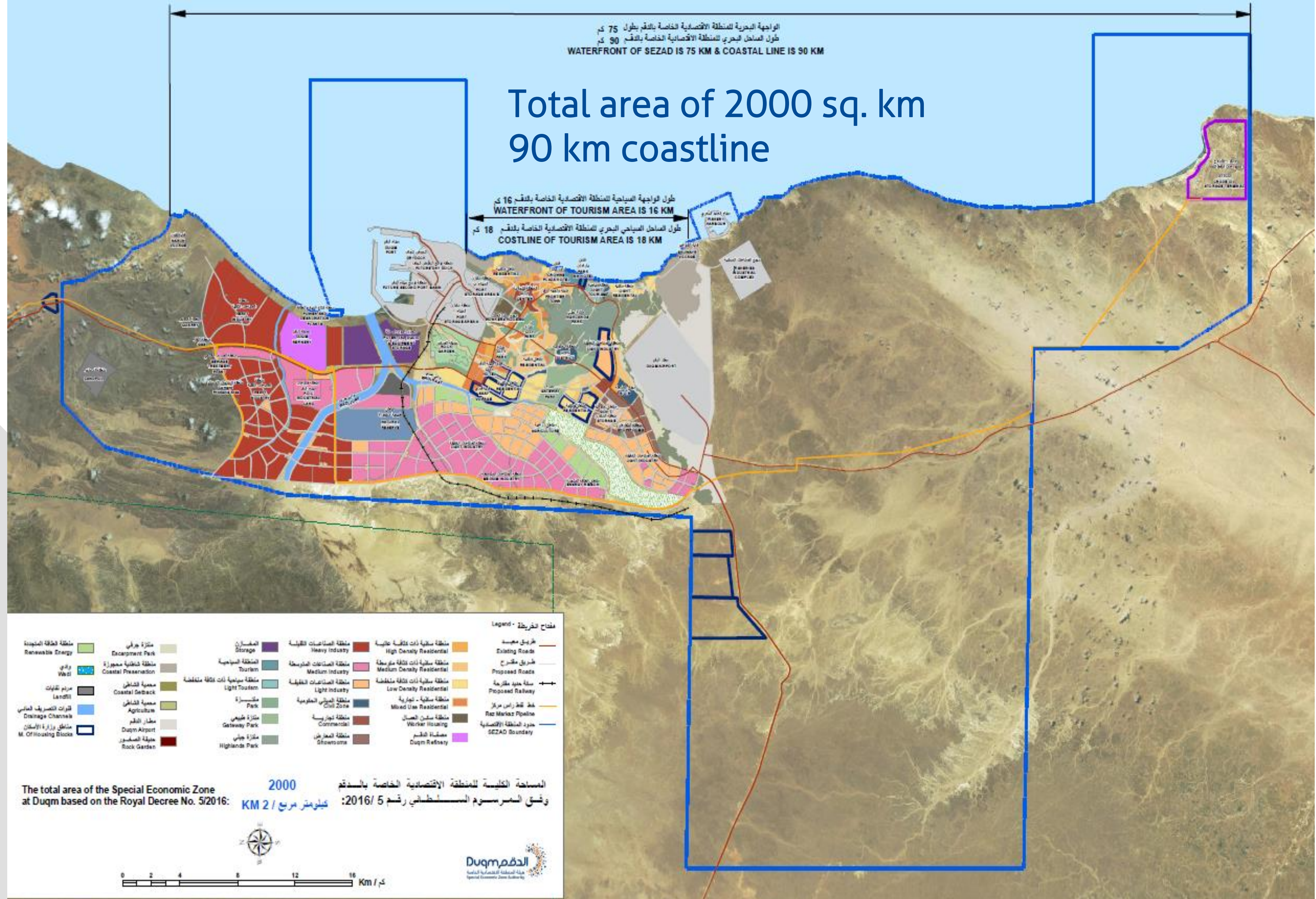
*offering strategic access to major logistical centers and  
emerging world markets.*



الواجهة البحرية للمنطقة الاقتصادية الخاصة بالدقم بطول 75 كم  
 طول الساحل البحري للمنطقة الاقتصادية الخاصة بالدقم 90 كم  
 WATERFRONT OF SEZAD IS 75 KM & COASTAL LINE IS 90 KM

Total area of 2000 sq. km  
 90 km coastline

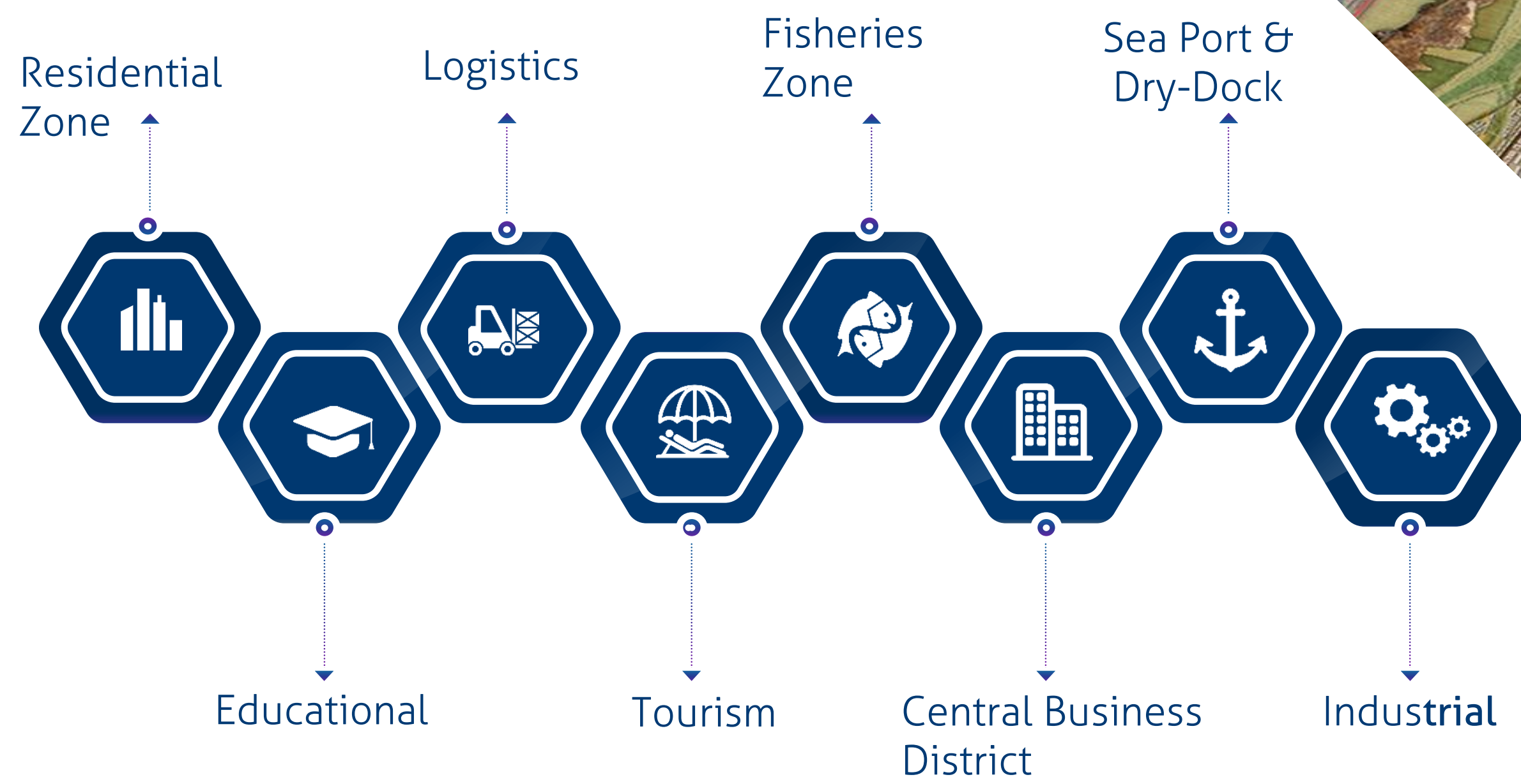
طول الواجهة السياحية للمنطقة الاقتصادية الخاصة بالدقم 16 كم  
 WATERFRONT OF TOURISM AREA IS 16 KM  
 طول الساحل السياحي البحري للمنطقة الاقتصادية الخاصة بالدقم 18 كم  
 COSTLINE OF TOURISM AREA IS 18 KM



المساحة الكلية للمنطقة الاقتصادية الخاصة بالدقم  
 وفق المرسوم السلطاني رقم 5 / 2016: 2000 كيلومتر مربع / 2 KM  
 The total area of the Special Economic Zone at Duqm based on the Royal Decree No. 5/2016: 2000 KM 2

الدقم  
 Duqm Municipality  
 Special Economic Zone Authority







# Multi-Model transportation System...

Integrated transport system through modern  
road network, ports and airport







# Port of Duqm...

## Multi purpose port

*With berths of handling high load vessel ship*



## FACTS & FIGURES

### AREA

Total port boundary: 170 km<sup>2</sup>

Land area accommodates: commercial quays,  
liquid jetties and  
1550 ha for logistics (warehousing, storage  
and services)

### BREAKWATERS

Lee breakwater: 4.5 km

Main breakwater: 4.1 km

### WATER DEPTH

to allow safe reception of vessels with capacity up to 150 000 DWT

Approach channel: -19m

Commercial berths : -18m



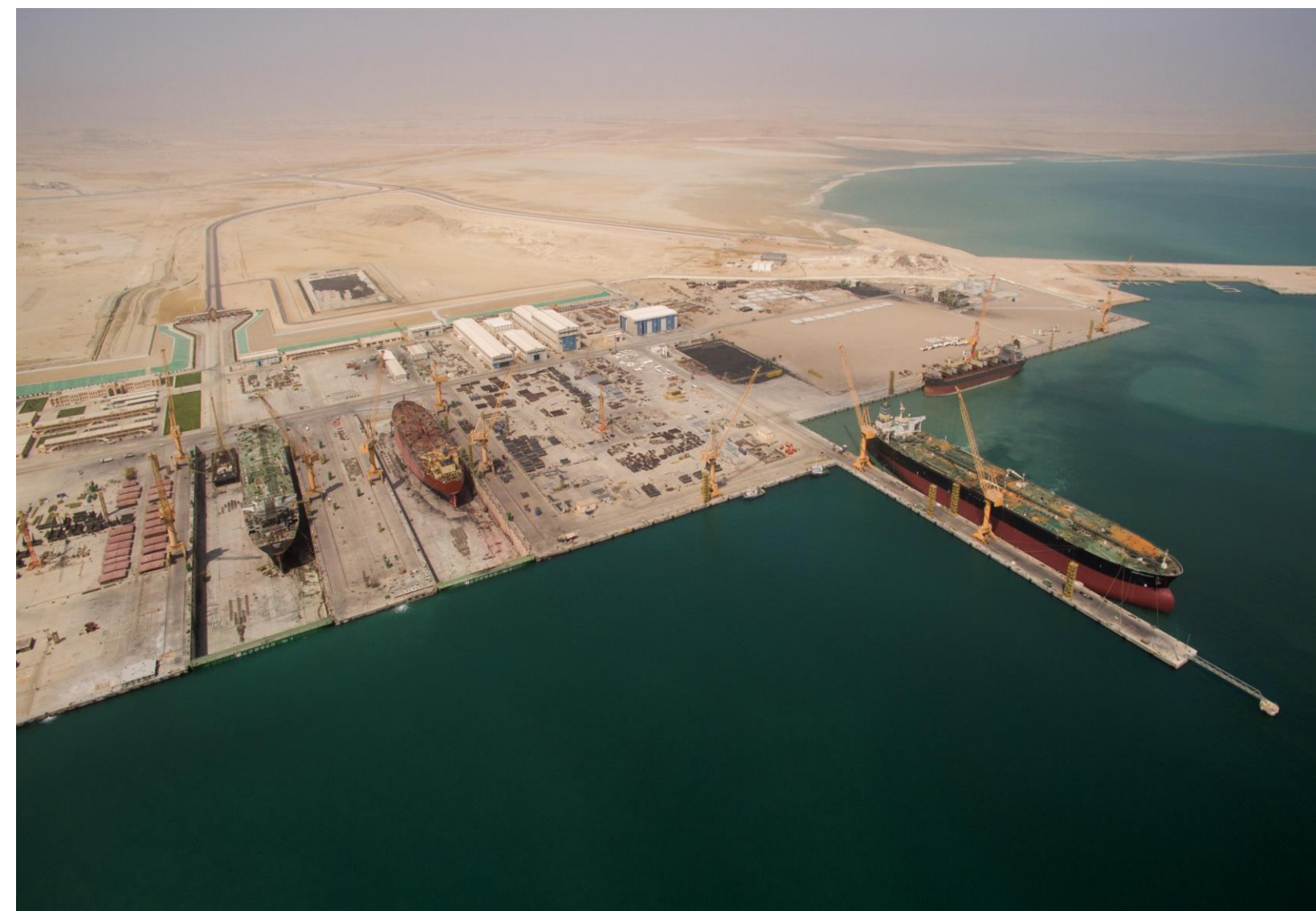
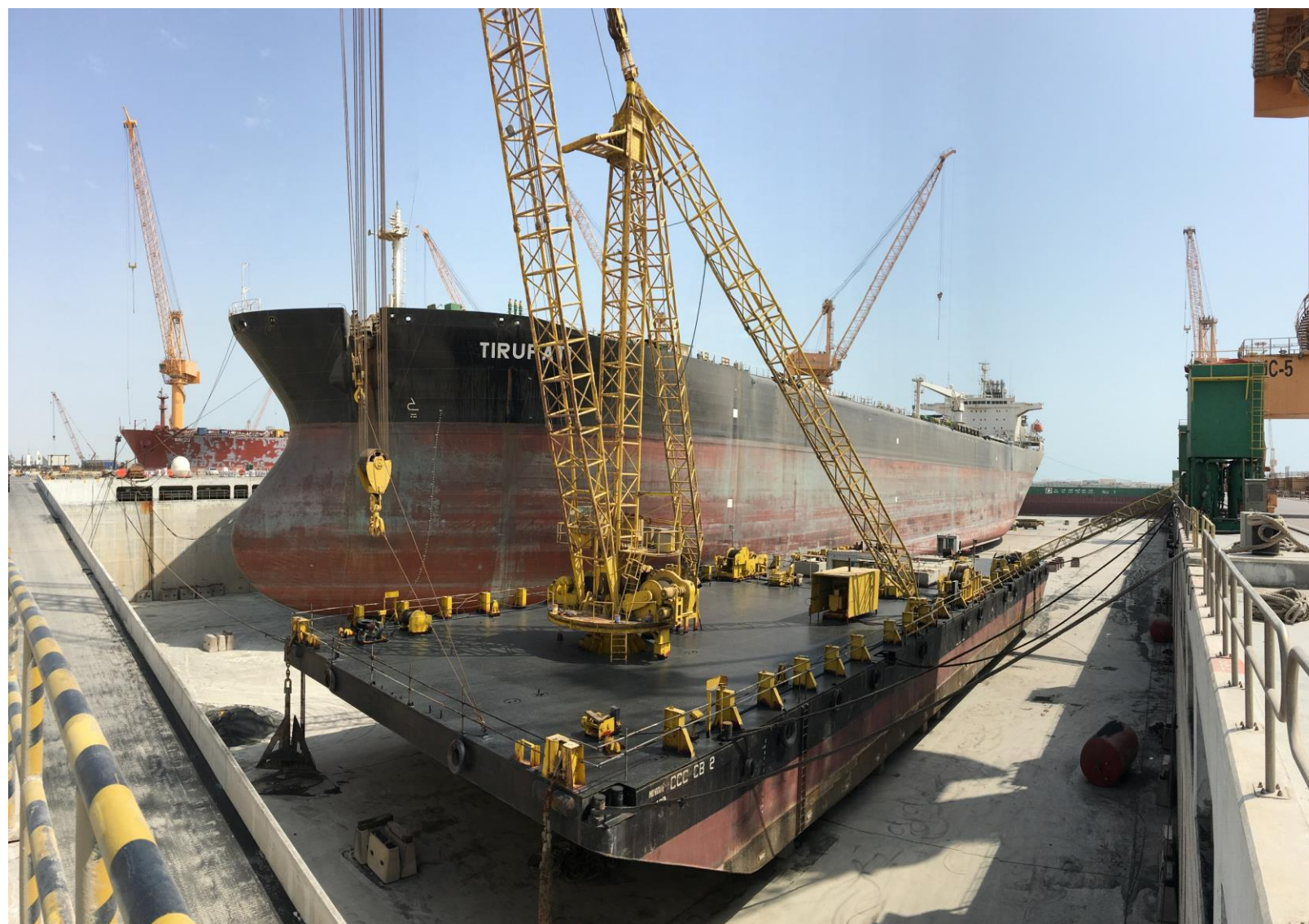


Oman Dry-Dock...





“



## GRAVING DOCK & FLOATING DOCK:

Dock No.1	410 m x 95 m	600,000 DWT
Dock No.2	410 m x 80 m	500,000 DWT
Floating Dock	Panamax	80,000 DWT
(planned)		

Safe docking draft 7 m.

”



Duqm Airport...





“



annual cargo capacity of 50,000 tonnes

24 km away from the port & 19 Km away from the city center

designed to all types of aircraft including those handling large passenger loads or air cargo with in-flight catering facilities (A380 and equivalent aircraft.)

”



An aerial night photograph of a modern urban road network. The scene features a large, multi-lane highway with a central roundabout. The roads are illuminated by streetlights, and the surrounding area includes buildings, parking lots, and landscaped green spaces with palm trees. The image is presented with a white diagonal overlay on the left side.

Road Network...



“

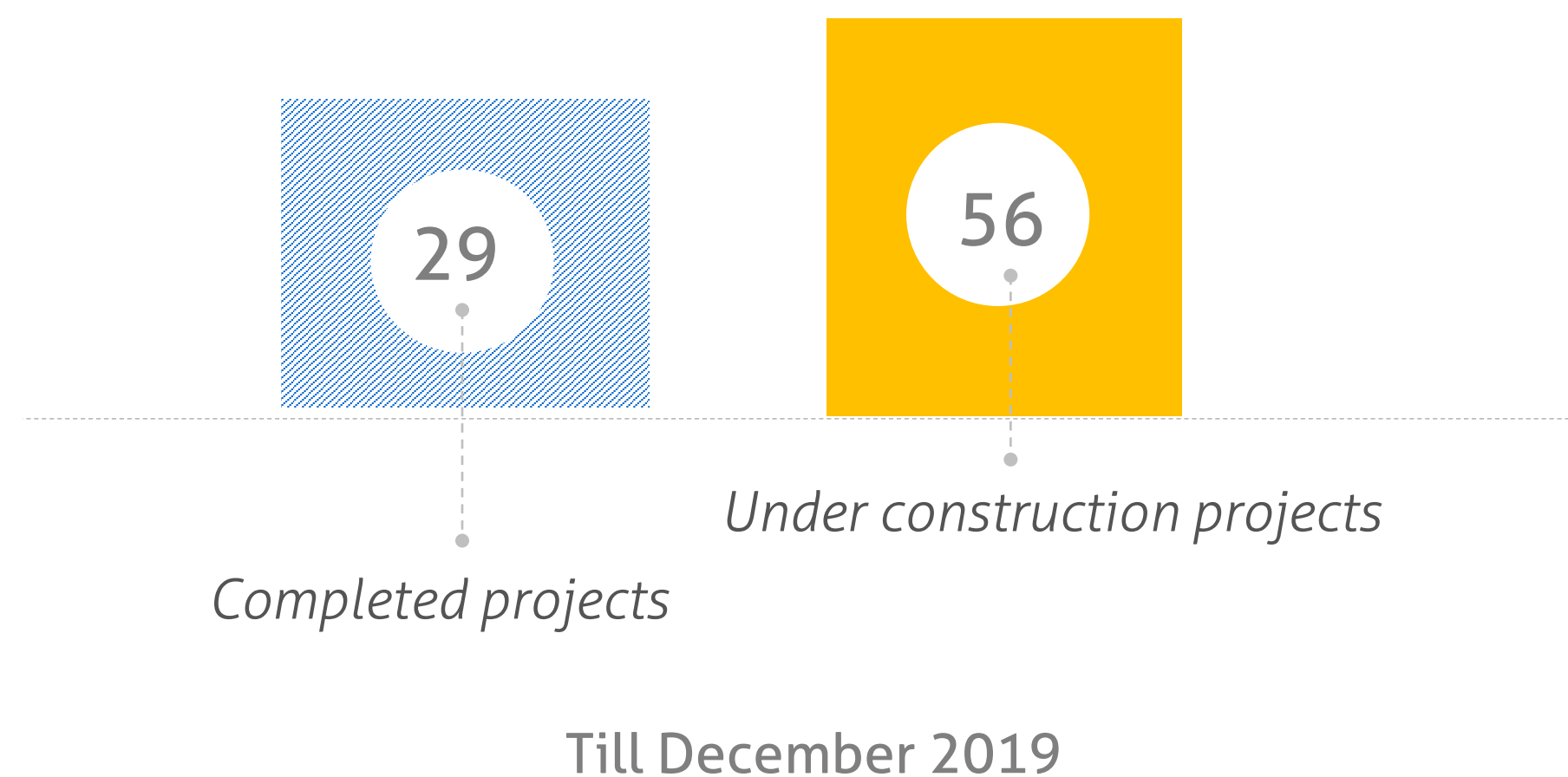


”



# Investment Environment...

Attracting and localizing investment  
projects in different sectors







# A place where the desert meets the sea

Aspirational tourism destinations with  
outstanding natural beauty

Luxury tourism destinations  
with beach front hotels,





# Crown Plaza...

Total of 288 Rooms



An aerial photograph of the Park Inn Duqm resort. The resort features a large number of small, modern chalets arranged in a grid-like pattern. The chalets are light-colored with flat roofs and are surrounded by lush green lawns and numerous palm trees. A winding road or path runs through the resort. In the background, a wide, sandy beach stretches along the coastline, meeting the dark blue sea. The sky is clear and blue.

# Park Inn Duqm ...

Total of 77 chalets



# City hotel Duqm...

Total of 118 Rooms





# Renaissance City...

Total Capacity of 17,000 beds





An aerial photograph of the Duqm Refinery construction site. The image shows several large circular storage tanks under construction, with their metal frameworks visible. To the right, there are long, rectangular industrial buildings with steel skeletons. The ground is sandy and covered with construction equipment, materials, and vehicles. A diagonal white line cuts across the image from the top left to the bottom right, separating the text area from the image.

## Duqm REFINERY

“ Duqm Refinery is the first major industrial project to be planned and built in the Duqm SEZ and will serve as a springboard for other development ”

 joint venture between the Oman Oil Company (OOC) and Kuwait Petroleum - Europe (KPE) to develop, build, and operate an export refinery complex

 Duqm Refinery has the capacity to process around 230,000 barrels per day from a variety of crude mixtures



# Oman-China INDUSTRIAL PARK

**\$10.7**  
Billion  
Investment

**1172 HA.**  
Land

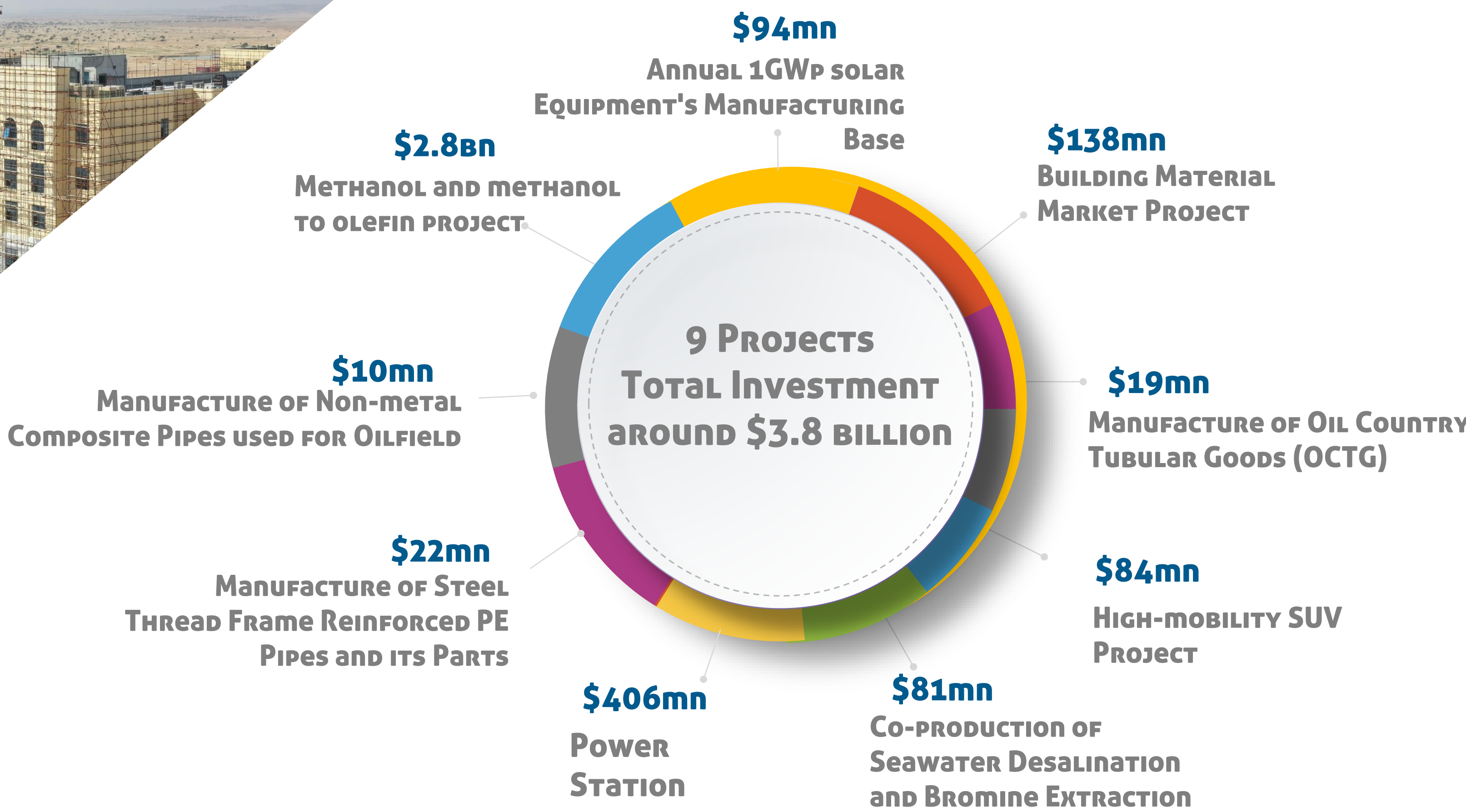
**12,000**  
Employees







# FIRST STAGE OF THE China-Oman INDUSTRIAL PARK





“



China- Oman  
Industrial Park...

”





# Expanding the Potentials ...

Unique trade eco-system

Access to tax-free zones  
Business-friendly ethos



# Never Been This Easy...

Quick approval procedures



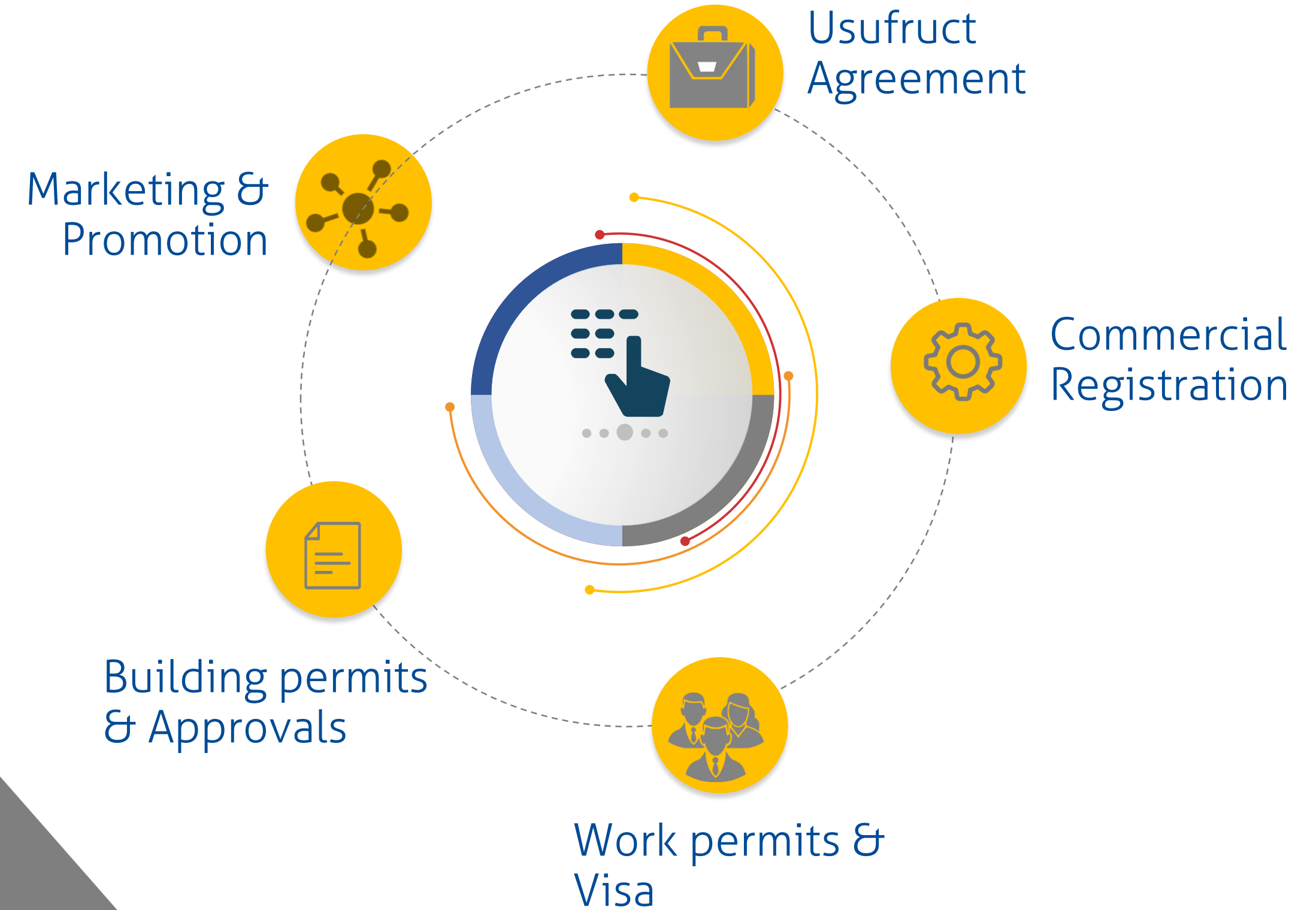


Never Been This Easy...

Committed for all permits issuance  
required for a project



Duqm One Stop Shop  
*QUICK APPROVAL PROCEDURES ...*





# Getting Started

## The Premium Business Address...



### STEP 1

submit the application along with relevant supporting documents

### STEP 2

Get the right location & plot size for your business

### STEP 3

Come on board & Kick-start your journey with SEZAD



# Free & Open Eco-System to attract business and investment

## Preferential Policies & Incentives

### Great Value Offer ...

*incentives currently in place to foster business growth*

- ✓ 100% foreign ownership
- ✓ No currency restrictions
- ✓ No minimum capital requirement
- ✓ Tax exemption up to 30 years from the date of commencement of operations, renewable for a further 30 years.
- ✓ 100% repatriation of capital and profit is permitted.
- ✓ Usufruct agreements up to 50 years, renewable for similar periods



# Diverse Business Interests

Duqm's strategic position and connectivity make it an ideal place to start a business in a number of promising sectors





- 
- ✓ Oil & Gas
  - ✓ Fishery Sector
  - ✓ Logistics & Warehousing
  - ✓ Tourism & Real estate
  - ✓ Mining
  - ✓ Agribusiness Opportunities
  - ✓ Healthcare & Education